

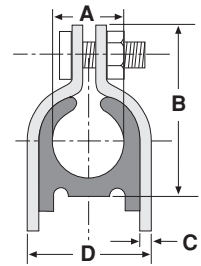
# STRUT CLAMPS



## Clamp With Cushion

2501-2514

Fig. Number	O.D. Size A	Nom. Tube Size	B	C	D	Std. Package	Wt. Each (in Lbs.)
2501	1/4	1/8	1 1/16	.060	1/2	30	.12
2502	3/8	1/4	1 1/4	.060	5/8	30	.13
2503	1/2	3/8	1 3/8	.060	3/4	30	.13
2504	5/8	1/2	1 1/2	.060	7/8	20	.15
2505	3/4	5/8	1 3/4	.075	1 1/8	20	.21
2506	7/8	3/4	1 7/8	.075	1 1/4	20	.22
2507	1 1/8	1	2 1/16	.075	1 1/2	10	.29
2508	1 3/8	1 1/4	2 7/16	.075	1 3/4	10	.33
2509	1 5/8	1 1/2	3	.105	2 1/4	10	.42
2510	2 1/8	2	3 3/8	.105	2 3/4	10	.50
2511	2 5/8	2 1/2	3 7/8	.105	3 1/4	10	.62
2512	3 1/8	3	4 5/16	.105	3 3/4	10	.66
2514	4 1/8	4	5 1/2	.125	4 3/4	10	.88



Available in stainless steel. To order, specify 304 or 316 and add suffix SS to fig. number.  
Price on request.