

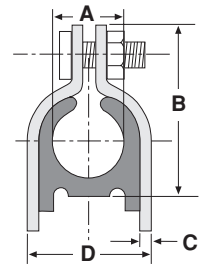
STRUT CLAMPS



Clamp With Cushion

2501-2514

Fig. Number	O.D. Size A	Nom. Tube Size	B	C	D	Std. Package	Wt. Each (in Lbs.)
2501	1/4	1/8	1 ¹ / ₁₆	.060	1/2	30	.12
2502	3/8	1/4	1 ¹ / ₄	.060	5/8	30	.13
2503	1/2	3/8	1 ³ / ₈	.060	3/4	30	.13
2504	5/8	1/2	1 ¹ / ₂	.060	7/8	20	.15
2505	3/4	5/8	1 ³ / ₄	.075	1 ¹ / ₈	20	.21
2506	7/8	3/4	1 ⁷ / ₈	.075	1 ¹ / ₄	20	.22
2507	1 ¹ / ₈	1	2 ¹ / ₁₆	.075	1 ¹ / ₂	10	.29
2508	1 ³ / ₈	1 ¹ / ₄	2 ⁷ / ₁₆	.075	1 ³ / ₄	10	.33
2509	1 ⁵ / ₈	1 ¹ / ₂	3	.105	2 ¹ / ₄	10	.42
2510	2 ¹ / ₈	2	3 ³ / ₈	.105	2 ³ / ₄	10	.50
2511	2 ⁵ / ₈	2 ¹ / ₂	3 ⁷ / ₈	.105	3 ¹ / ₄	10	.62
2512	3 ¹ / ₈	3	4 ⁵ / ₁₆	.105	3 ³ / ₄	10	.66
2514	4 ¹ / ₈	4	5 ¹ / ₂	.125	4 ³ / ₄	10	.88



Available in stainless steel. To order, specify 304 or 316 and add suffix SS to fig. number.
Price on request.